

**Summer 2024**

# Shared Harvest

**FOODBANK**



## **Our Mission**

**To find, rescue, and distribute food to people living in poverty through an efficient network, uniting the public and private sectors; to raise awareness of the impact of poverty.**



# A Letter From Our Executive Director...

I drove slowly up the mile long driveway leading up to Radiant Church that shines like a beacon at the top of the hill. Radiant is one of our rural partner agencies in Darke County who distributes food on an appointment basis throughout the month. Radiant also hosts our monthly drive through food distribution in their parking lot. They open their doors as a cooling center for our team to take breaks from the weather during our distributions and any food left over at the end is provided to them to distribute throughout the month until we return.

I have attended several of these events in Darke County, but on this particular hot August day, the unfettered sun reflected like spotlights on my face from the windshields of the cars that lined the driveway as I passed. I was keenly aware that our neighbors in need had arrived over an hour early as they baked in the 92-degree heat, waiting for us to begin. With each car that I passed, I was reminded of the tremendous responsibility ahead. My chest tightened and my eyes began to well.

Once I reached the top, the parking lot opened up and our trucks and volunteers were ready and waiting. Becca Cotterman from the Darke County United Way had coordinated more than a dozen volunteers from Midmark to help us load cars. In just an hour and a half, 318 families received a variety of produce, frozen meats, milk, bread, and a reminder that they are valued and loved.

The picture below is from our June distribution. Despite buckets of rain, our volunteers persisted, uninhibited in their joy to serve our neighbors. In our line of work, we get to experience some of the best of humanity. These selfless acts of love, often unrecognized, leave lasting impressions by those who are blessed by them. It was the tireless work of our Founding Executive Director, Tina Osso that fed my family when I was a child.



Unbeknownst to her, she was investing in her successor. Never forget that a single act of kindness can make a lasting impact. Come, be part of something great. We welcome you.

Affectionately,

*Terry L. Perdue*  
TERRY PERDUE





# January - June 2024 Update

## Food Donations

6.6 Million Pounds



## Volunteer Hours

4,399 Hours



## Food Distributed

5.6 Million Pounds



**Thank You to Our Members, Donors, and Volunteers!**

## Top Food Donors by Pounds

Ohio Association of Foodbanks  
Ohio Department of Job and Family  
Services (USDA)  
Aldi Inc.  
Amazon.com, Inc.  
Bob Evans Farms, Inc.  
Costco Wholesale Corporation  
Jungle Jim's  
Kraft Heinz Company  
The Kroger Co.  
Matthew 25 Ministries  
Meijer Inc.  
Mondelez International, Inc.  
Reiter Dairy LLC  
Target Corporation  
Tyson Foods Inc.  
Walmart Inc.

## Top Volunteer Hours

Mary B.  
Pamela T.  
Shelley H.  
Tim R.  
Andy S.  
Connie W.  
Rose Marie D.  
Sandra M.  
Randy H.  
Jim G.

THANK  
YOU



# Ohio CAN & Local Food Purchasing Program



**In partnership with the Ohio Association of Foodbanks and the Ohio Department of Agriculture, Shared Harvest is connecting our neighbors with locally grown produce, fresh meat, dairy, and more!**

**We received grant funds that allow us to work with historically underrepresented regional producers by offering them fair market value for the amazing products they have to offer to the community. This program has already provided more than 30,000 pounds of fresh foods to our neighbors this year.**

**Farmers and producers whose products are grown and produced within 400 miles of Columbus are eligible to apply.**

**If you are interested in learning more about the program, please visit:  
<https://agri.ohio.gov/divisions/markets/resources/Ohio-CAN>**



Department of  
Job and Family Services



# Map the Meal Gap 2024



Food insecurity is defined by the United States Department of Agriculture (USDA) as the lack of access to enough food for an active, healthy life due to limited financial resources.

The USDA reported that in 2022, the most recent year of data available, the overall food insecurity rate increased sharply, rising from **10.4%** in 2021 to **13.5%** in 2022. The change reflects the largest one-year increase since 2008, and the rate, which amounts to over 44 million people, or 1 in every 7, is the highest it has been since 2014.

Shared Harvest is seeing these trends in our data as well, with a 40% increase in the numbers of families we serve. It is imperative to our mission that we continue to grow and remain a steady resource for all families that rely on us to close the meal gap.

<https://map.feedingamerica.org/county/2022/overall/ohio>

## The Ohio Association of Foodbanks: Hunger in Ohio 2024

### Study Finds Majority of Ohio Foodbank Clients Forced to Choose Between Affording Food or Other Basic Household Expenses

*The findings are from a survey of more than 2,000 foodbank network neighbors who visited Ohio foodbanks between April 15 to May 12.*

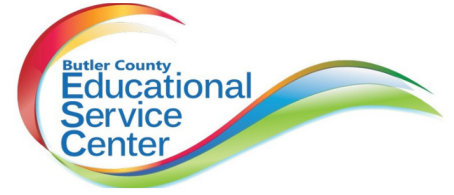
COLUMBUS, OH - A study conducted by the Ohio Association of Foodbanks found that an alarming number of Ohioans are being forced to choose between buying food and paying for other essential expenses including medication, household utilities and childcare. The findings, released, are from an anonymous statewide survey, which included 2,301 validated responses from residents in 30% of all Ohio zip codes.

To read the full report, please visit:

[https://ohiofoodbanks.org/site/assets/files/2967/hunger\\_study\\_2024\\_6.pdf](https://ohiofoodbanks.org/site/assets/files/2967/hunger_study_2024_6.pdf)



# MEMBER AGENCY SPOTLIGHT

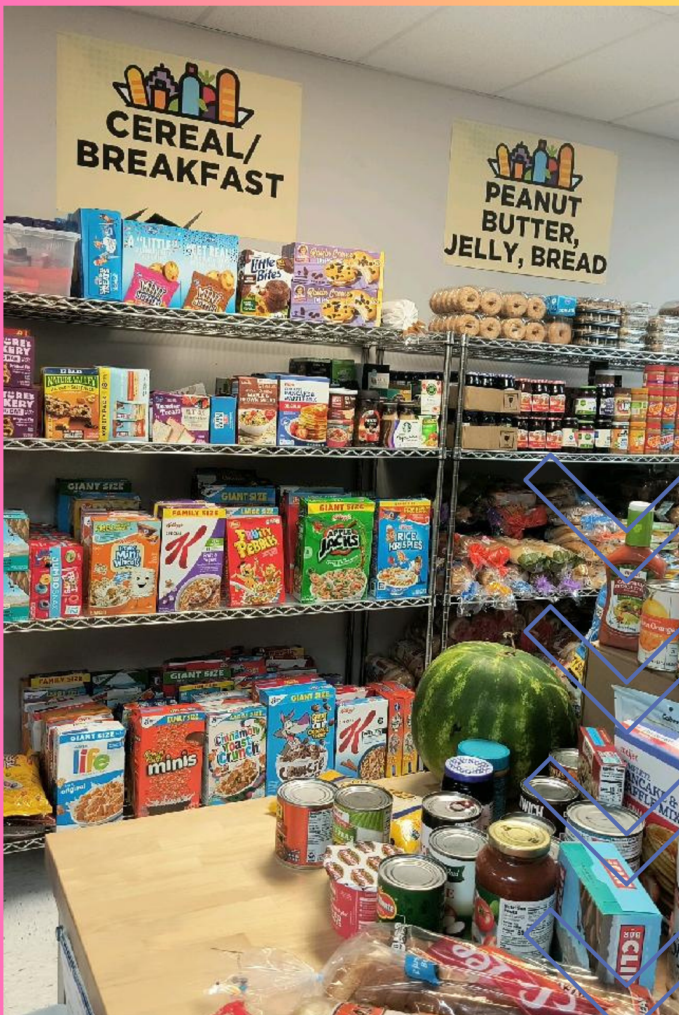


Shared Harvest Foodbank was delighted to onboard a brand-new food pantry located inside the Butler County Educational Services Center so that school liaisons have access to fresh groceries, along with food staples, to nourish the families of those they serve.

The Director of Early Childhood State Programs at the BCESC, Emily White, had this to say about the partnership; "As we approach the one-year mark for the Compassion Food Pantry, I reflect on how it all began—a simple conversation about the needs within our school districts and Early Childhood Programs. That simple conversation led to the partnership with Shared Harvest that made our dream a reality and we will forever be grateful for what we've built together.

This partnership exemplifies true community collaboration, agencies and individuals combining their skills, knowledge and experience to help those who have a need. From the beginning Shared Harvest has listened to our needs, helped us strategize our plans, provided feedback on ways to improve, and challenged us to think differently about food insecurity in our community and how we can respond to the unique needs of all families.

Terry and the entire Shared Harvest team have always been willing to help, any time we call/email (which is all the time), the response is always "let me see what I can do". This response has drastically changed our operations and reach in our community.





The initial plan for our pantry was just to provide food boxes upon request from our staff members and school districts, and it has evolved into so much more. With the help of Terry and Shared Harvest we have already expanded operations to include the Holiday Break Box Project, Summer Box Distributions, and school based pantry assistance while also increasing the quality of food we are able to provide.

Terry is a visionary, inspirational, strategic, and forward thinking, without him and the entire Shared Harvest team, our pantry would still be a dream. Thank you will never be enough.

In short, we would not exist without Terry or Shared Harvest. I'm personally forever grateful for the opportunity I get everyday to be a small piece of the puzzle in helping those in need access food. What a privilege this journey has been."

**Food Insecurity rates in Butler County now estimate that almost 13% of the county's population is struggling to access enough healthy food for their families. Of those families, only 43% qualify to receive SNAP benefits. This is where food pantries, such as the Compassion Food Pantry, fill in the gap.**

# SEPTEMBER IS HUNGER ACTION MONTH!



**Hunger Action Month, an annual campaign in September, is the time to come together to elevate the voices of people who experience food insecurity and inspire everyone to join the nationwide movement to end hunger. Stay tuned to our website and social media for events this September:  
<https://www.sharedharvest.org/events>**

## How you can help:

- **Donate to Shared Harvest or get your friends and family involved by starting a personal fundraiser. Every dollar becomes eight meals and allows us to provide other services for people facing hunger**
- **Volunteer! Many food programs and pantries rely on volunteers. See how you can help in your community.**
- **Advocate to pass a strong farm bill that helps everyone keep food on the table.**



[www.sharedharvest.org](http://www.sharedharvest.org)





FOODBANK

5901 Dixie Highway  
Fairfield, Ohio 45014-4207  
www.sharedharvest.org  
513-881-9024

Non-Profit Org.  
U.S. Postage  
Paid  
Cincinnati, OH  
Permit No. 770

# THANK YOU!

Our work is not possible without supporters like you, please consider a donation today!

**\$1 = 8 Meals**

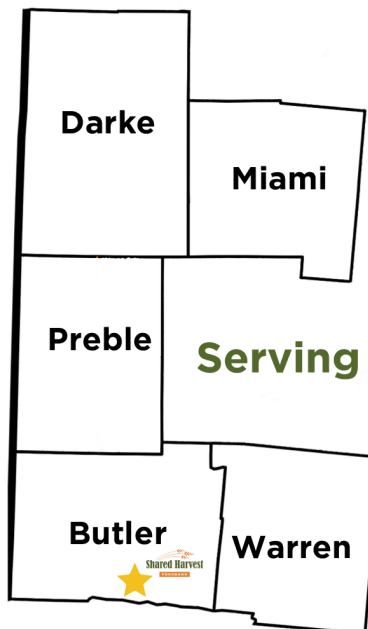


Food Items most needed:

- Peanut Butter
- Canned Fruits & Vegetables
- Canned Spaghetti Sauce
- Soups & Stews
- Canned Beans
- Canned Tuna or Chicken
- Boxed Meals like Mac & Cheese

Donations can be dropped at our Fairfield location during office hours.

M-F 7:00am-3:30pm



**Serving SW Ohio since 1983!**

[www.sharedharvest.org](http://www.sharedharvest.org)

Summer 2024

